



Tri-Optic®

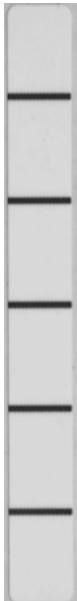
EDP/TRI-OPTIC LABELS

1682-BWL, BWO

1/2" Tape Cartridges

(3480 Form Factor)

(3480/3490/3490E/3590/3590E/4480/4490/4490E/9490EE/9840/9940/T9940/SD3)



Description

BWL - Blank labels with dividing lines for 6 characters

BWO - Blank labels without lines

Non-barcoded

20 labels per sheet

0.386" X 3.125"

©EDP/Tri-Optic

EDP, Inc. U.S. Patents 4,939,674; 5,083,916; 5,288,107; and other U.S. and Foreign patents pending.

Revision 2 – 4/19/2004