



**Tri-Optic®**

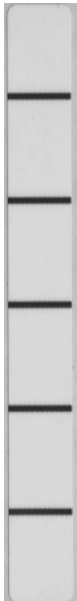
## **EDP/COLORFLEX LABELS**

### **1682-BWL, BWO**

### **1/2" Tape Cartridges**

### **(3480 Form Factor)**

(3480/3490/3490E/3590/3590E/4480/4490/4490E/9490EE/9840/9940/T9940/SD3)



#### **Description**

**BWL - Blank labels with dividing lines for 6 characters**

**BWO - Blank labels without lines**

**Non-barcoded**

**20 labels per sheet**

**0.386" X 3.125"**

©EDP/Colorflex

EDP, Inc. U.S. Patents 4,939,674; 5,083,916; 5,288,107; and other U.S. and Foreign patents pending.

Revision 1 – September 10, 2001